



TOTALEXAM® Lite

State of the Art General Exam and Otoscope Imaging in a Lightweight, Economical Package

Specifically designed with the clinician and medical professional in mind, the TotalExam® Lite camera set is our most feature complete medical imaging solution for telemedicine. Designed for lightweight and affordability, the TotalExam® Lite camera set includes both general exam and otoscope models. Incorporating over twelve years of innovation, the cameras can be used standalone or integrated with the GlobalMed eNcounter® virtual health platform.

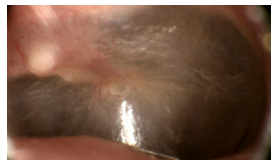
FEATURES

- High Resolution Sensor for Precise Exam Imaging
- Extended Field of View Eliminates Need for Multiple Exam Images
- Superior Operation in Low Lighting
- Variable Illumination Levels
- Optimized Color for Truer Images
- Advanced Auto-Focus and Intelligent Frame Capture for Clearer Images
- Patented USB Safety Lock, Ergonomic Grip and Easy to Clean Surfaces

SUPERIOR IMAGING



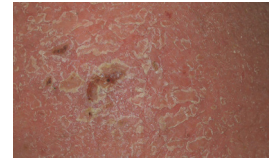
Eye



Ear



Mouth



Skin



+1 (480) 922-0044
globalmed.com

15023 N 73rd Street
Scottsdale, AZ 85260
United States



TOTALEXAM® Lite



High Resolution Auto Focus Imager

Intelligent Image Capture

White Balance

Illumination Mode

Tongue Depressor Holder

Ergonomic Grip Design

Camera Status Indicator

Cable Safety Lock

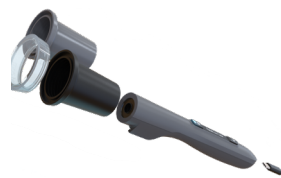
7.75"
(190mm)



Easy-On Adult and Child Speculas



Integrated Tongue Depressor Holder



Patented Dual Polarizing Dermatology Hood

SPECIFICATIONS

FEATURES

- General Exam and Otoscope styles
- One Hand Operation
- Ergonomic Grip, Easy to Clean Surface
- Full Motion MJPEG video (30 fps)
- Intelligent Image Capture
- Variable LED brightness levels
- Standard USB 2.0 connection for Mac, PC & Linux
- Camera Status Indicator
- Drop Proof Poly Carbonite Blend Construction
- Weight 3.11 oz (88.4 g)
- EMI, EMC, CE
- FDA cleared and FCC approved
- 1-year Warranty

OPTICS

- 1.2 MP Image Sensor (1080 x 720 Resolution)
- Built-in Auto Focus Engine (65 mm – 3 meters)
- Amazing Low Light Performance
- Optimized Color Temperature
- Auto/Manual White Balancing

KIT CONTENTS

- **General Exam Camera Kit**
 - General Exam Camera
 - Polarizing Dermatology Hood
 - Non-Polarizing Dermatology Hood
 - One Touch Collars (5)
 - 6" Adult Tongue Depressors (5)
 - USB 2.0 Cable, 2.5 Meters (1)
- **Otoscope Camera Kit**
 - Otoscope Camera
 - Adult Speculas, 4.25mm (5)
 - Child Speculas, 3.0mm (5)
 - USB 2.0 Cable, 2.5 Meters (1)

Part Numbers;

- GMD5505HD20 Combined General Exam & Otoscope Kit
- GMD5505HD21 General Exam Camera Only Kit
- GMD5505HD22 Otoscope Only Kit
- GMD17040425 Adult 4.25 mm Speculas (Qty 500)
- GMD17040300 Child 3.0 mm Speculas (Qty 500)
- GMD55100007 One-Touch Derm Collars (Qty 100)
- GMR14090003 Tongue Depressors (Qty 250)