



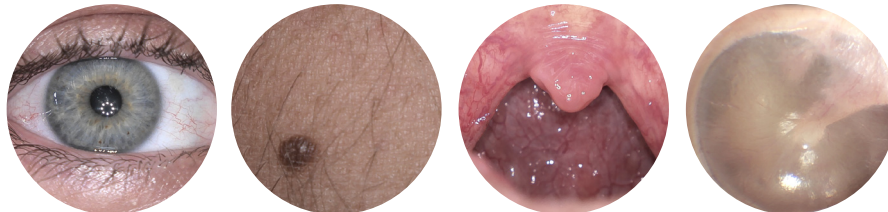
TOTALEXAM® 3.2

The TotalExam® 3.2 combines excellent HD image quality, intuitive design and versatility to take your telemedicine imagery needs to a new level of high definition imagery. The TotalExam 3.2 has interchangeable attachments and accessories, allowing a wide variety of medical evidence collection applications in fields such as teledermatology, ophthalmology, and family medicine.

The TotalExam 3.2 delivers crisp, artifact-free HD images, using an 8-LED carousel, with white balance and adjustable brightness. TotalExam 3.2 provides smooth video with 60 frames per second, and the clearest still image using count back freeze frame analysis.

The intuitive ergonomic design includes a pivoting head and instinctive button locations, making it easier to capture hard-to-reach images.

USB 3.0 connectivity makes the TotalExam 3.2 a true plug-and-play general examination camera, compatible with laptops, tablets, and telemedicine stations.



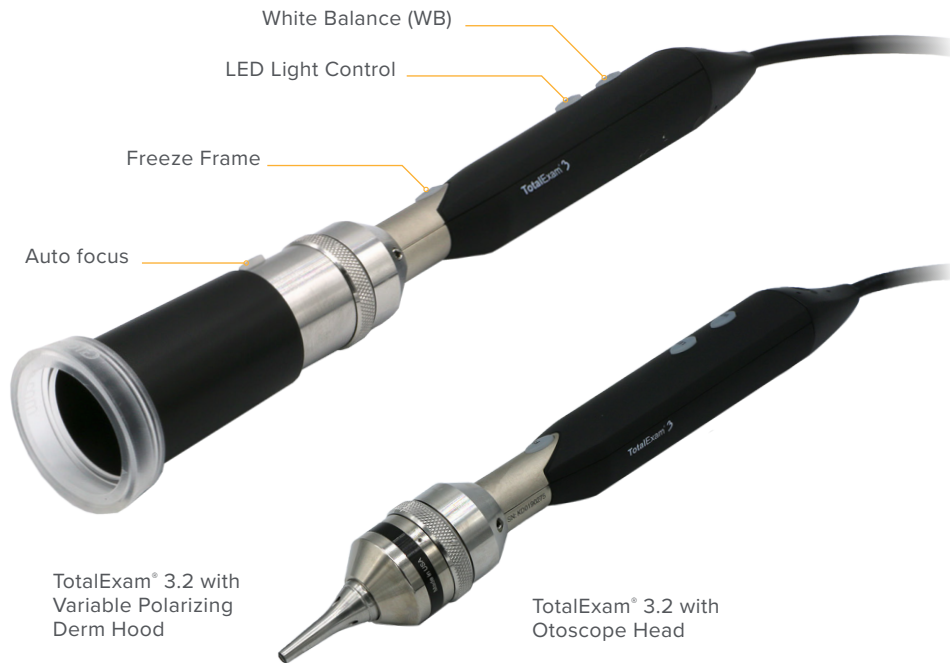
**Images are unedited*

+1 (480) 922-0044
globalmed.com

15023 N 73rd Street
Scottsdale, AZ 85260
United States



TOTALEXAM® 3.2



TotalExam® 3.2 with Variable Polarizing Derm Hood

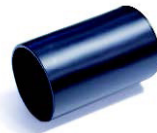
TotalExam® 3.2 with Otoscope Head



Otoscope head fits adult 4.25mm specula



Variable Polarizing Hood with disposable one touch collar



Derm Hood



Tongue depressor attachment fits standard 6.0 wooden depressors

Items in the TotalExam® 3.2 camera kit may be ordered separately. The complete kit includes:

- TotalExam® 3.2 Camera | Qty 1
- TotalExam® Autofocus Head | Qty 1
- TotalExam® Otoscope Head | Qty 1
- TotalExam® Variable Polarizing Derm Hood | Qty 1
- TotalExam® Derm Hood | Qty 1
- TotalExam® Tongue Depressor Adapter | Qty 1
- 6" Adult Tongue Depressor | Qty 5
- One Touch Collars | Qty 5
- Specula, 4.25mm | Qty 5

Dimensions	Camera Body: 214mm x 33mm Autofocus Head: 38mm x 33mm Otoscope Head: 60mm x 33mm
Body Weight	~10 oz
Focus Type	Autofocus
Snapshot Size	1 Megapixel
Video Resolution	1280 x 720p (captured)
Frame Rate	Up to 60 frames per second
Output	USB 3.0
Integrated Freeze Frame	Push-button <i>(selects clearest frame of previous 16 frames)</i>
White Balance	Push-button
Lighting	Autofocus Head: 8 LEDs Otoscope Head: 2 LEDs
Operating Temperature	0° - 42°C (32°-107°F)
Operating Humidity	Less than 90%
Power Usage	Less than 4W
Voltage Usage	~ 0.800 mA @5 VDC using USB 3.0 only
Aspect Ratio	16:9
Lens (Aperture)	f:3.0 M12 650nm IR filter f:18.0 FOV: r= 10mm DOF: 12mm - 14mm